



UC Davis Athletics Baseline Data 2000 to 2004

Prepared at the Request of

*Judy Sakaki, Vice Chancellor--Student Affairs
Leon Washington, Assistant Vice Chancellor--Student Affairs
on behalf of the*

- Athletic Administrative Advisory Committee (AAAC)
- Academic Senate

By

*Bill Kidder, Student Affairs
Thomas Estes, SARI
Gillian Butler, SARI
Elias Lopez, SARI*

APRIL 2006

Principals

Office of Vice Chancellor of Student Affairs

Judy Sakaki
Leon Washington

Athletic Administrative Advisory Committee (AAAC)

Kim Elsbach

Athletics Department

Greg Warzecka
Pam Gill-Fisher

Vice Provost of Undergraduate Studies

Fred Wood

Academic Senate

Dan Simmons
Ted DeJong

Table of Contents

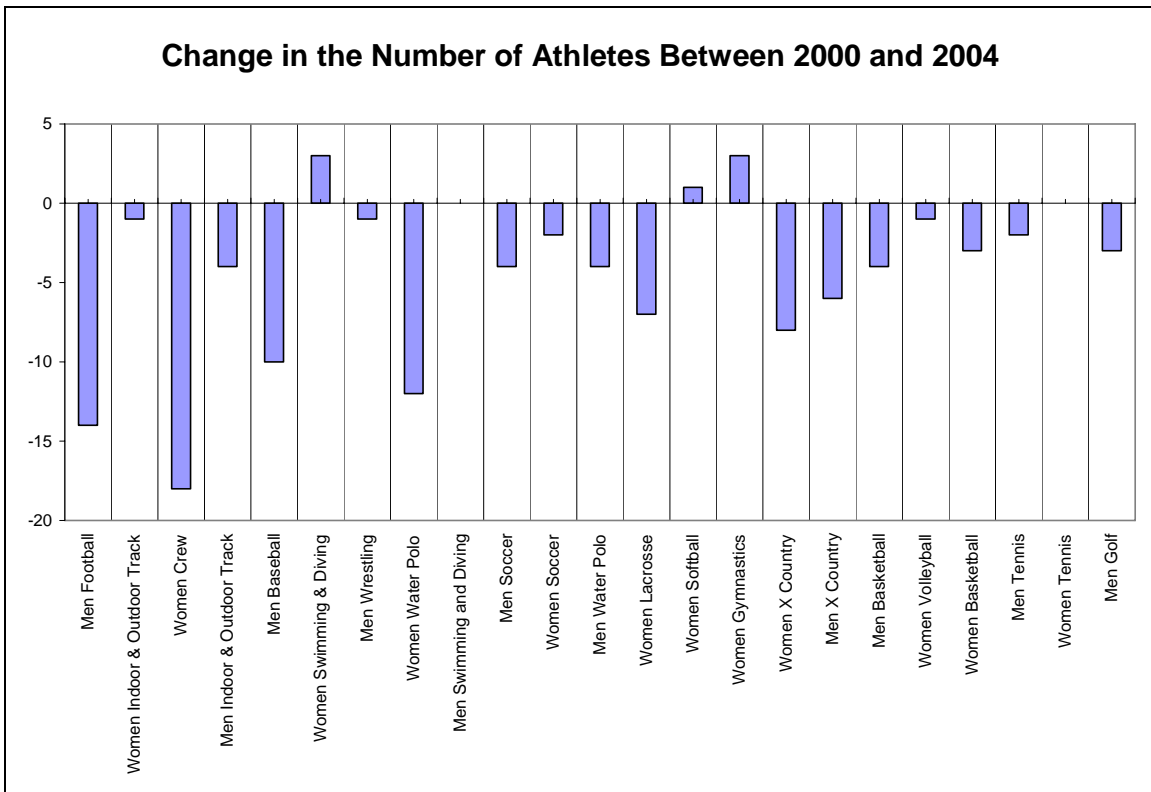
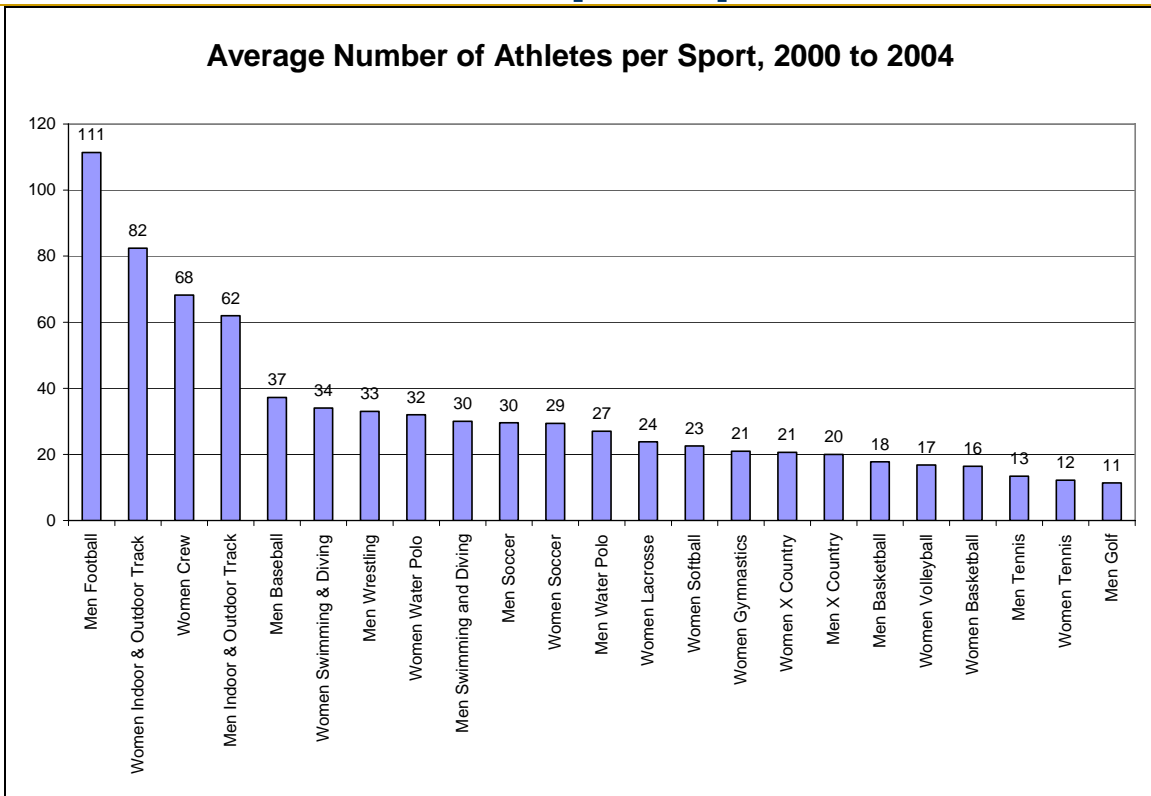
Summary.....	1
Athletes per Sport	2
Admission Characteristics.....	4
Performance at UC Davis.....	10
Graduation Characteristics.....	14
Tables	18

Summary

- Between 2000 and 2004, the total number of athletes admitted decreased from 278 to 230 (see page 5).
- Upon admission (for those enrolled),
 - In 2004, 98% of athletes were UC eligible (sponsored and un-sponsored), compared to 99% of non-athletes (page 20).
 - The mean composite SAT of freshman athletes is about 25 points lower than non-athletes (see page 6).
 - The mean GPA of entering freshman athletes is 3.6. This is 0.1 points lower than non-athletes (see page 7).
 - Over time, both athletes and non-athletes are entering with more A-G units (page 8).
- The percent of UC-eligible sponsored athletes (as a percent of total athletes) increased from 57% in 2000 to 78% in 2004 (see page 20).
- While at UC Davis,
 - The mean cumulative GPA of athletes and non-athletes is very similar, less than 0.1 points (see page 11).
 - The average units taken per quarter is increasing over time for non-athletes; for athletes it has remained constant (see page 12).
 - The percent of athletes and non-athletes going to summer school is increasing (see page 12).
 - For those attending summer school, the average number of units taken in the summer is increasing (page 13).
 - The percent of athletes and non-athletes on probation or subject to dismissal has stayed relatively constant (page 13).
- Of those who graduated, for the 2000 cohort,
 - Most athletes (50%) graduated with a major in the social sciences (page 15).
 - By four years, 30% of athletes had graduated compared to 43% for non-athletes (page 17).
 - However, by the fifth year, 85% of athletes had graduated compared to 75% of non-athletes (page 17).

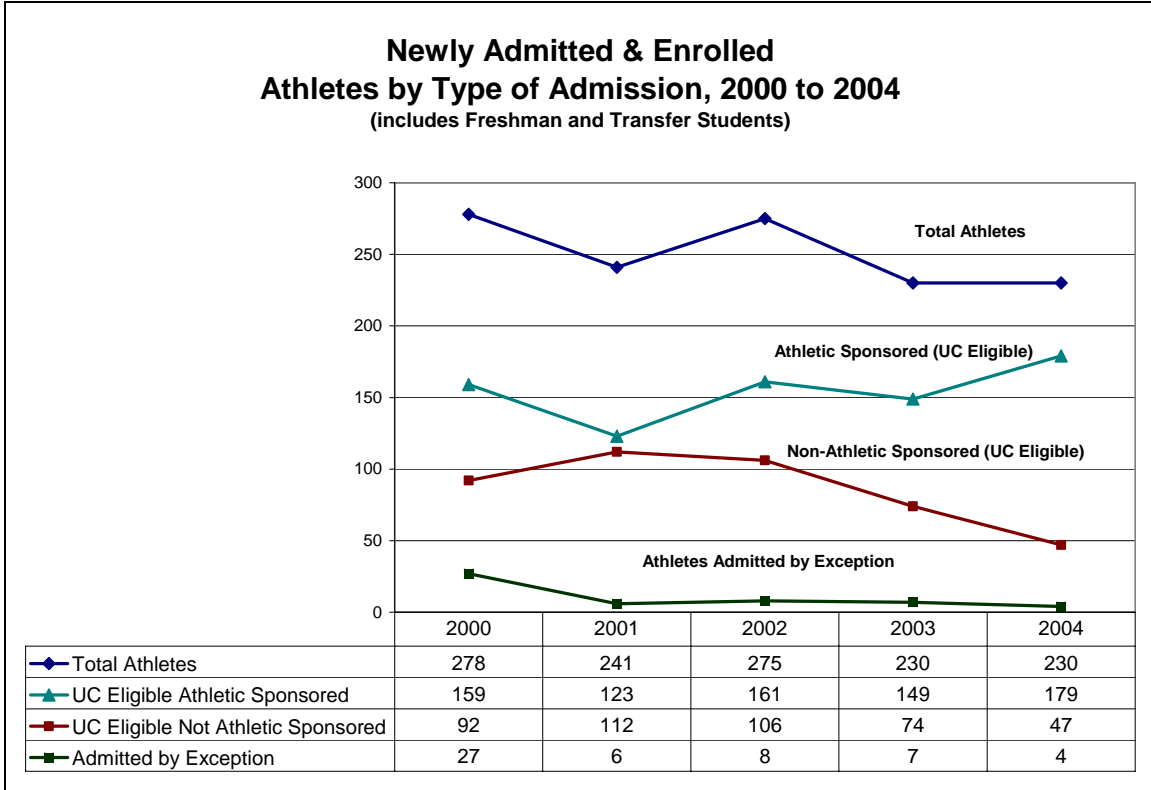
Athletes per Sport

Athletes per Sport

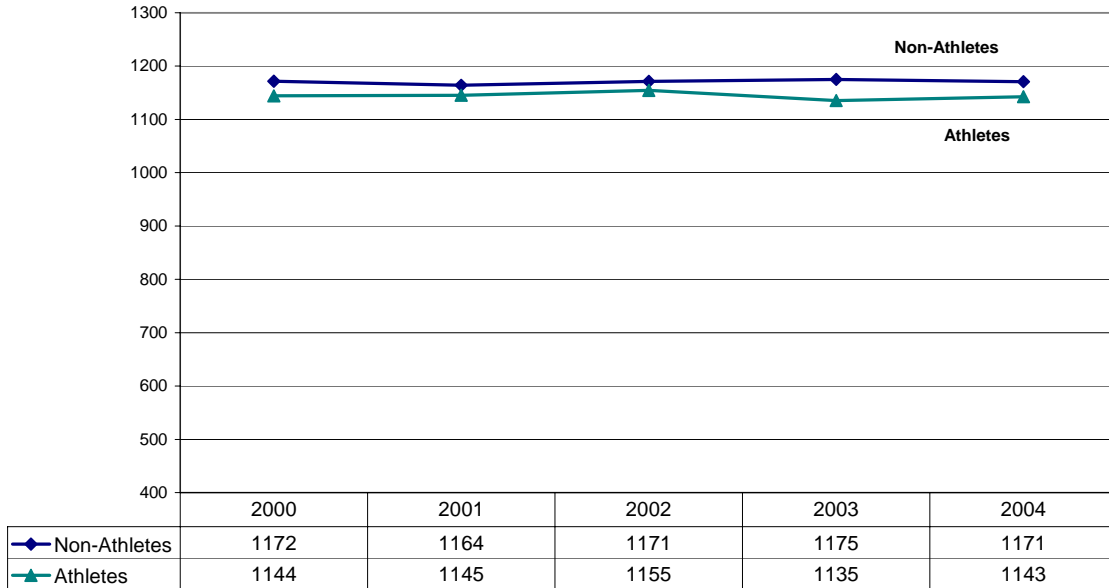


Admission Characteristics

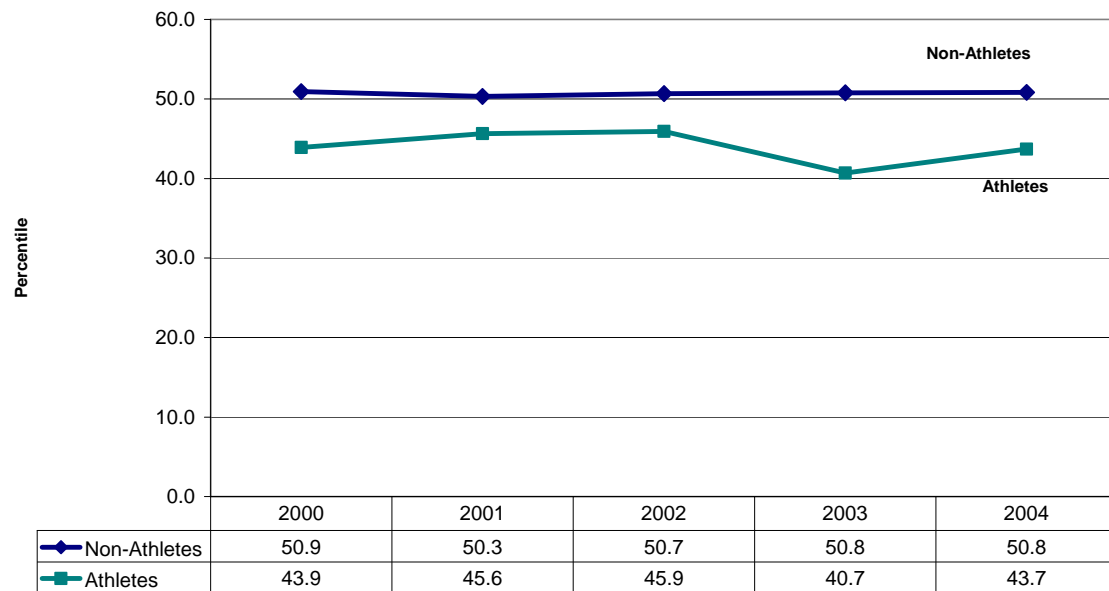
Characteristics at Admissions (enrolled)



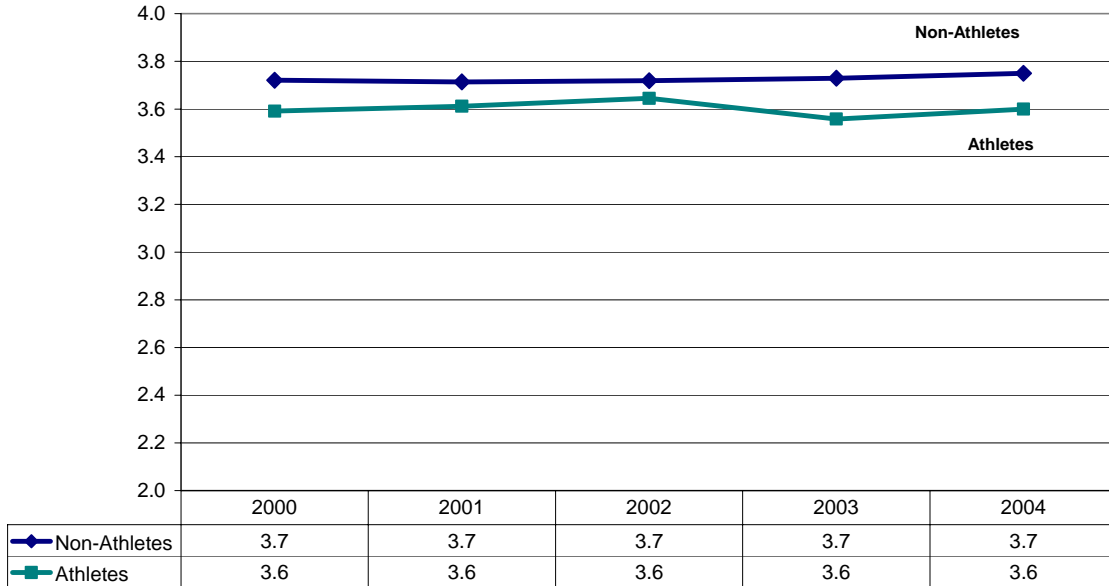
**Newly Admitted & Enrolled
The Mean SAT Composite Score of UCD Entering Freshmen,
Athletes and Non-Athletes, 2000 to 2004**



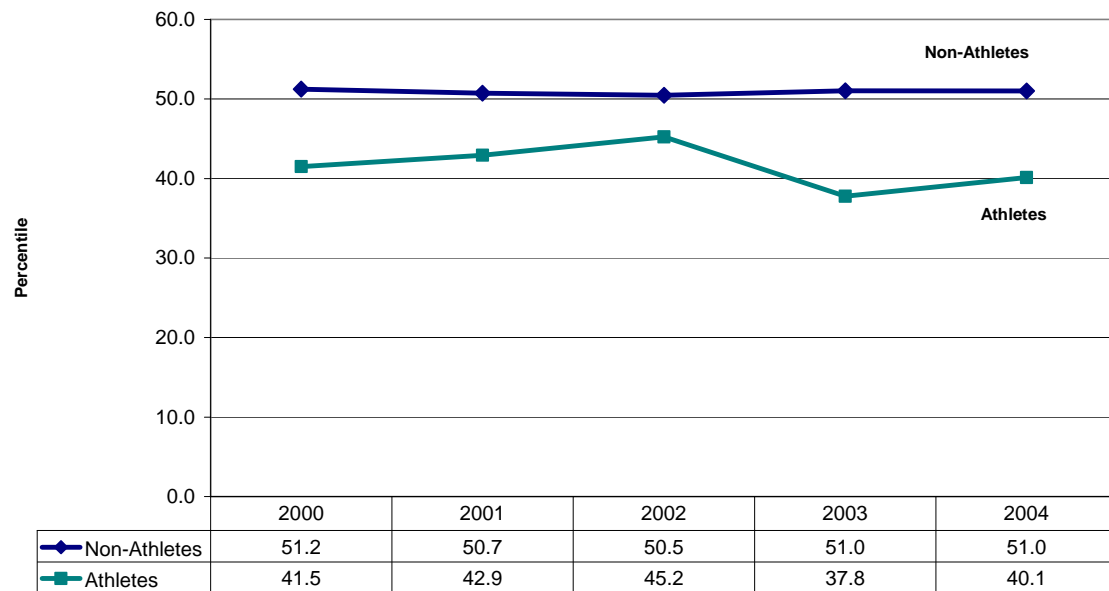
**Newly Admitted & Enrolled
Relative Ranking of SAT Composite Scores of UCD Entering
Freshmen, Athletes & Non-Athletes, 2000 to 2004**



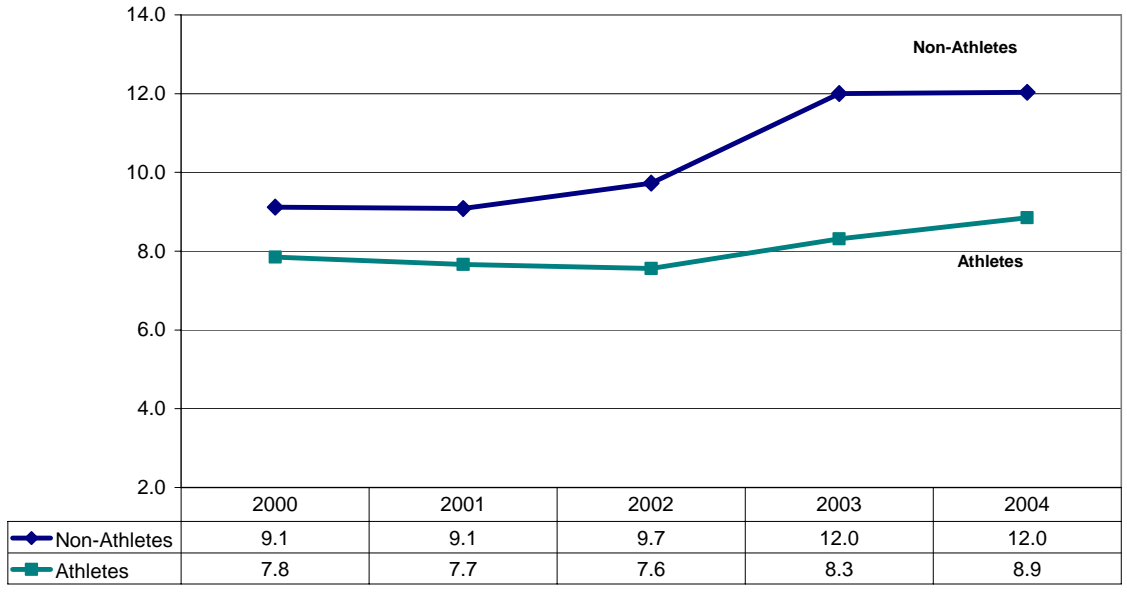
**Newly Admitted & Enrolled
The Mean GPA of UCD Entering Freshmen,
Athletes and Non-Athletes, 2000 to 2004**



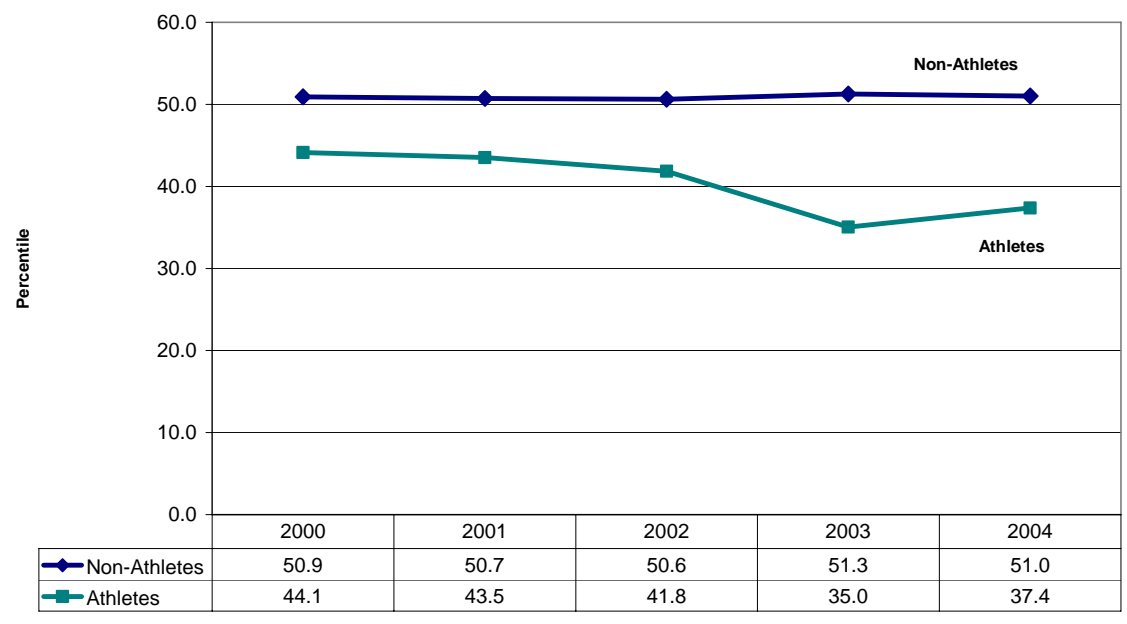
**Newly Admitted & Enrolled
Relative Ranking of High School GPA of UCD Entering
Freshmen, Athletes & Non-Athletes, 2000 to 2004**



**Newly Admitted & Enrolled
The Mean Number of Extra A-G Units (Beyond 35 Units) of
UCD Entering Freshmen, Athletes and Non-Athletes,
2000 to 2004**

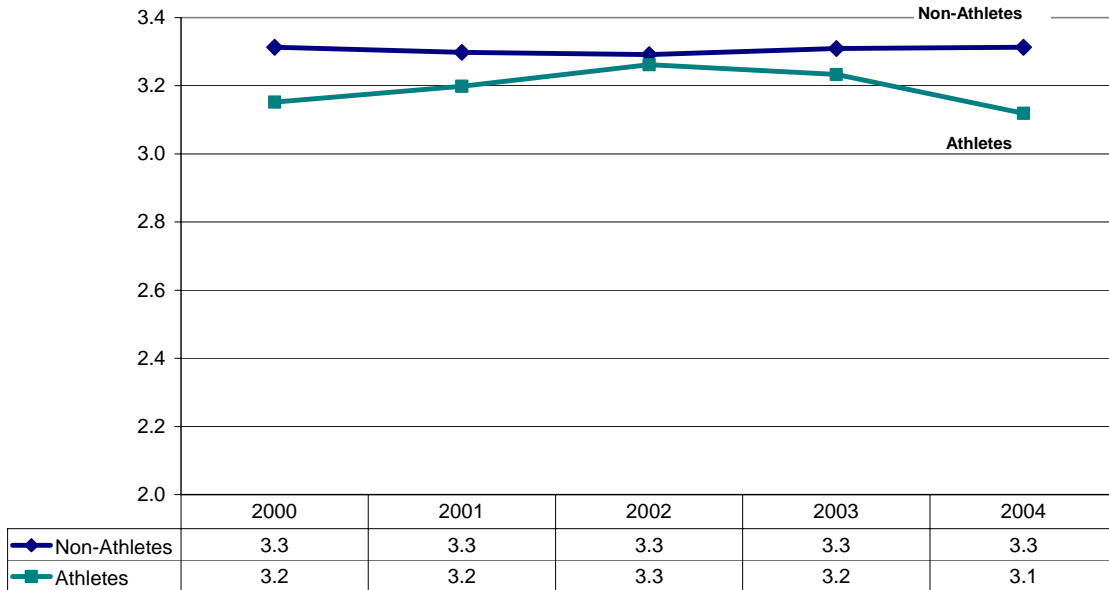


**Newly Admitted & Enrolled
Relative Ranking of the Extra A-G Units of UCD Entering
Freshmen, Athletes & Non-Athletes, 2000 to 2004**

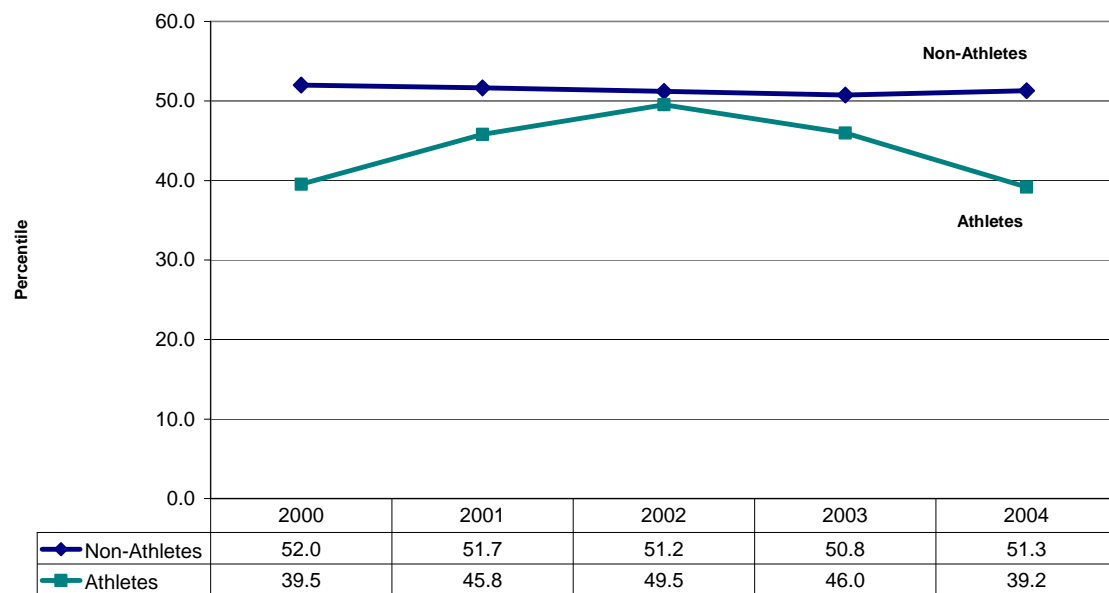


Although the relative ranking of athletes has fallen, their number of excess A-G units has increased over time (see the chart above). The number of excess A-G units for non-athletes has increased faster.

**Newly Admitted & Enrolled
The Mean GPA of UCD Entering Transfer Students, Athletes
and Non-Athletes, 2000 to 2004**



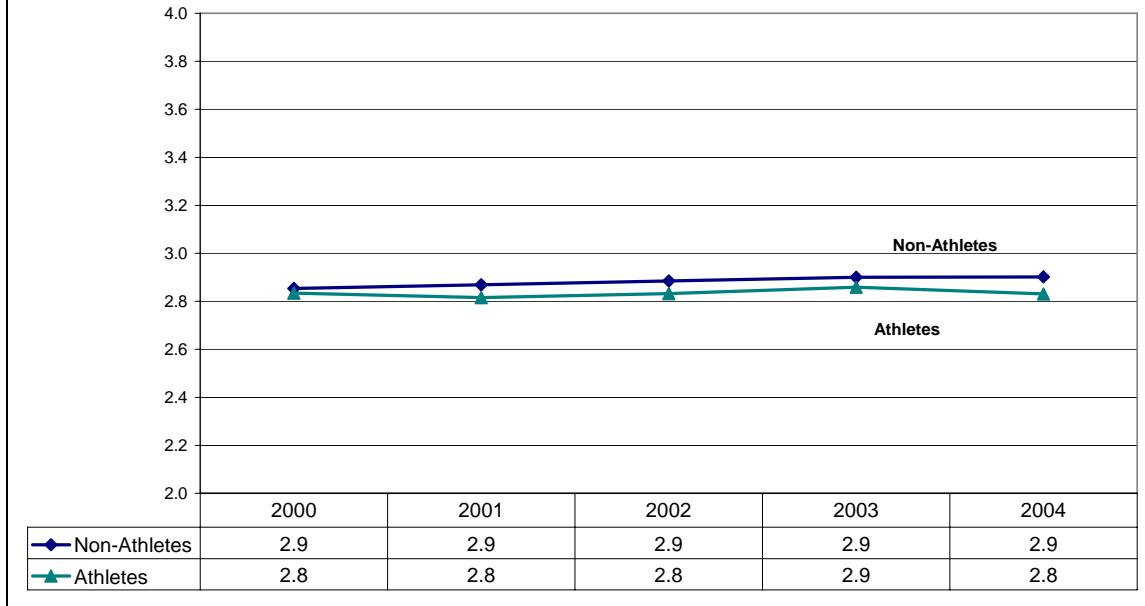
**Newly Admitted & Enrolled
Relative Ranking of the GPA of UCD Entering Transfer
Students, Athletes & Non-Athletes, 2000 to 2004**



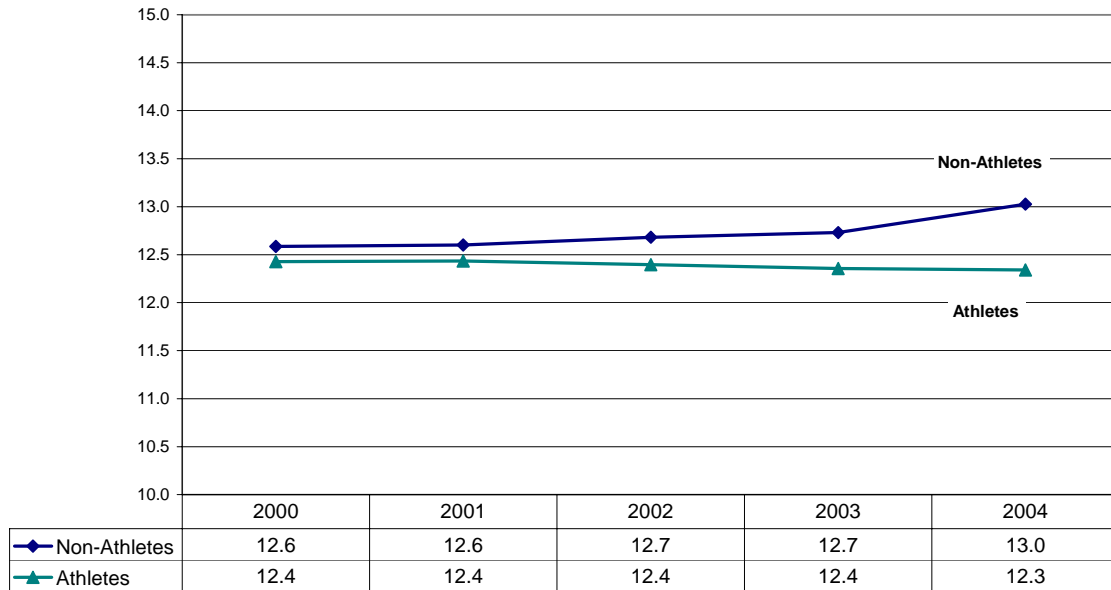
Performance at UC Davis

Academic Performance While at UC Davis

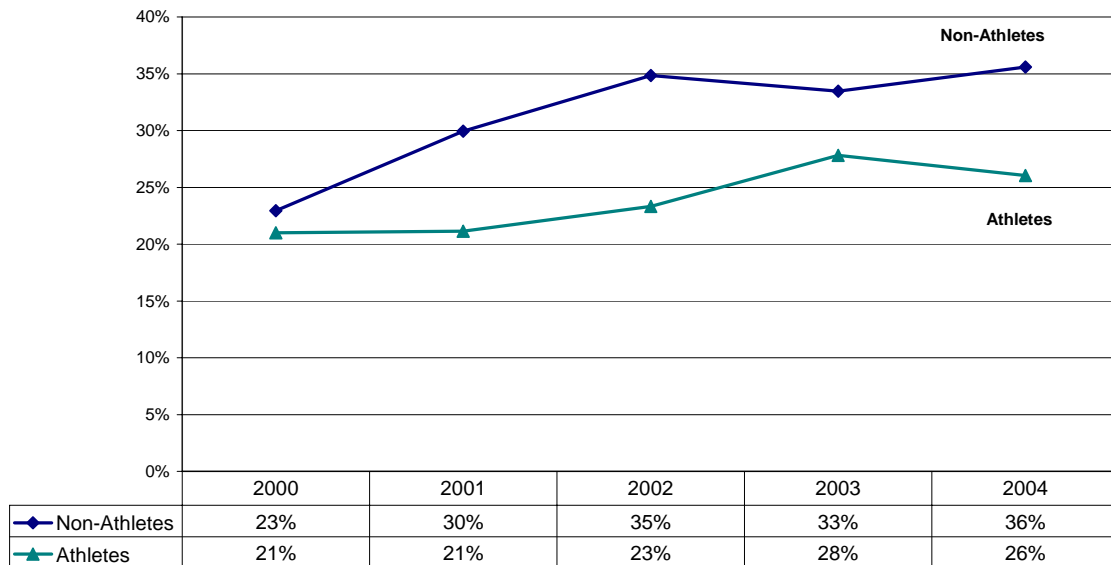
**While at UC Davis
The Cumulative GPA of Athletes and Non-Athletes, 2000 to 2004**



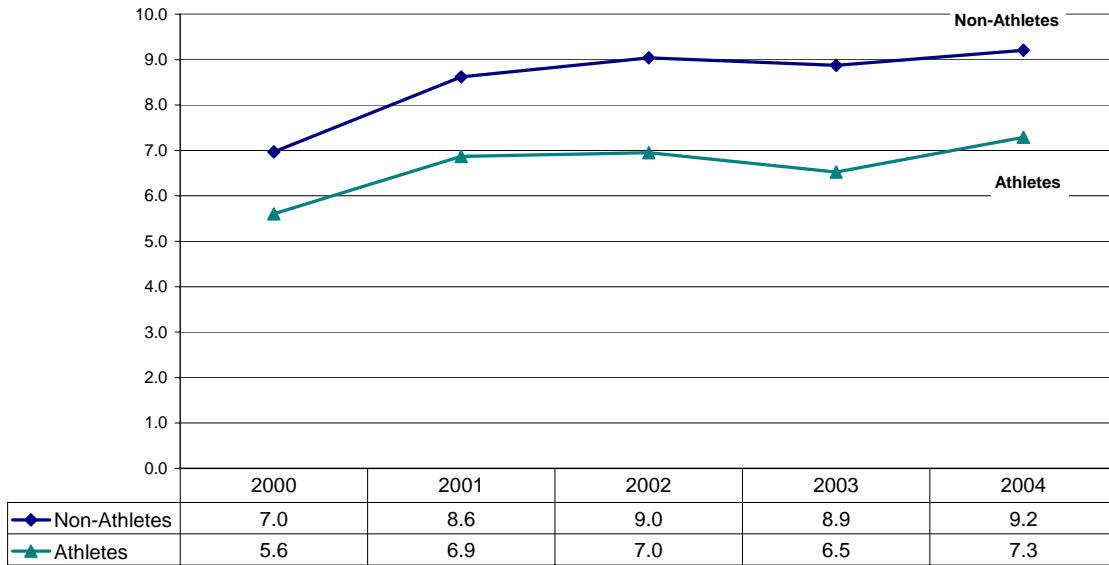
**While at UC Davis
Average Units per Quarter for Athletes and Non-Athletes, 2000
to 2004**



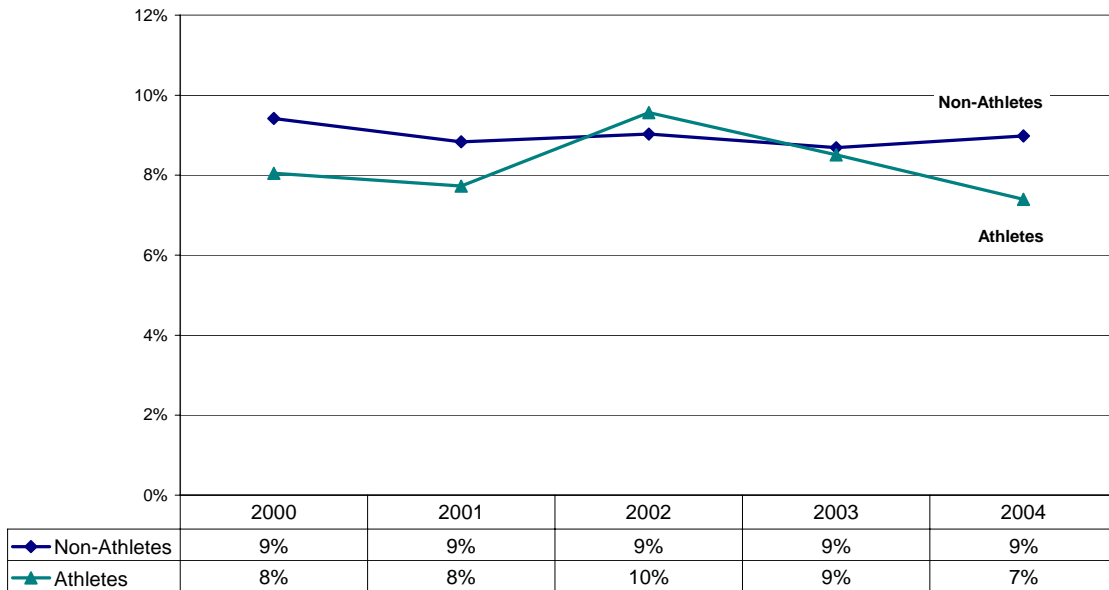
**While at UC Davis
Percent of Athletes and Non-Athletes Attending Summer
School, 2000 to 2004**
(students with graded units attempted in either summer session as of the census)



While at UC Davis
Mean Summer Units Taken by Athletes and Non-Athletes
Attending Summer School, 2000 to 2004
 (students with graded units attempted in both summer sessions as of the census)

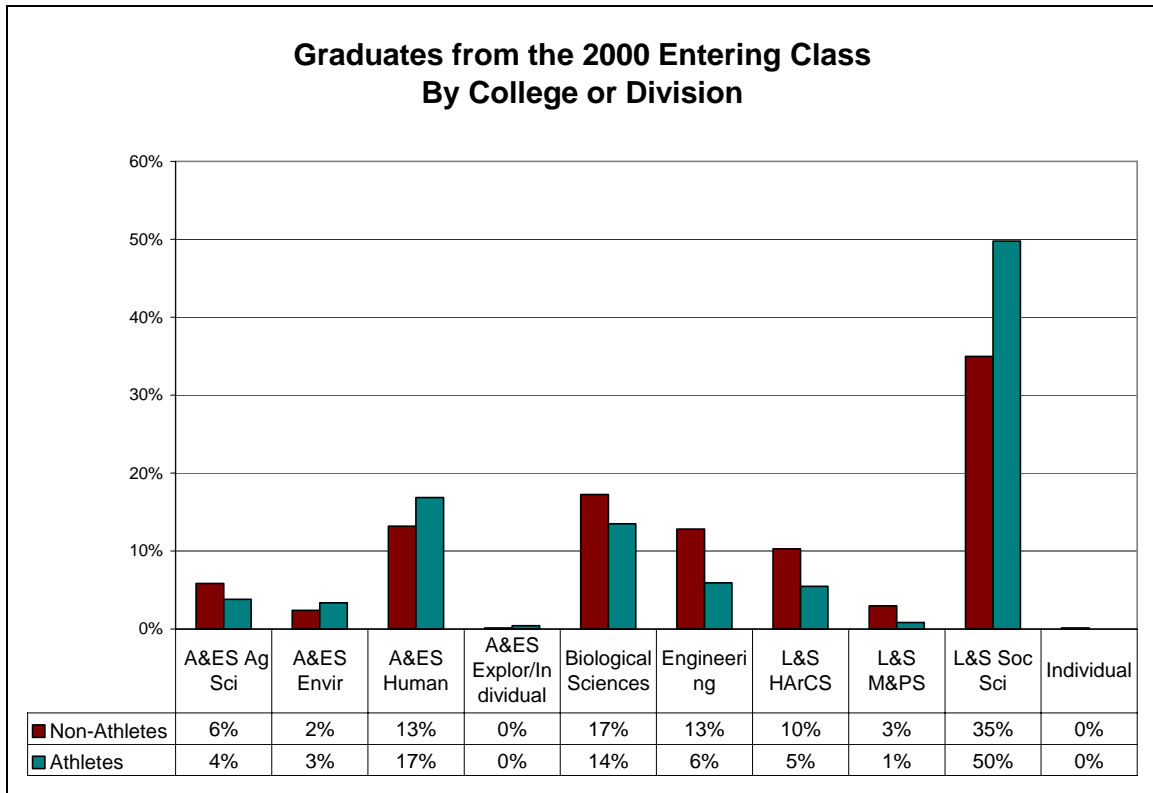


While at UC Davis
Percent of Athletes and Non-Athletes on Probation or Subject
to Dismissal, 2000 to 2004

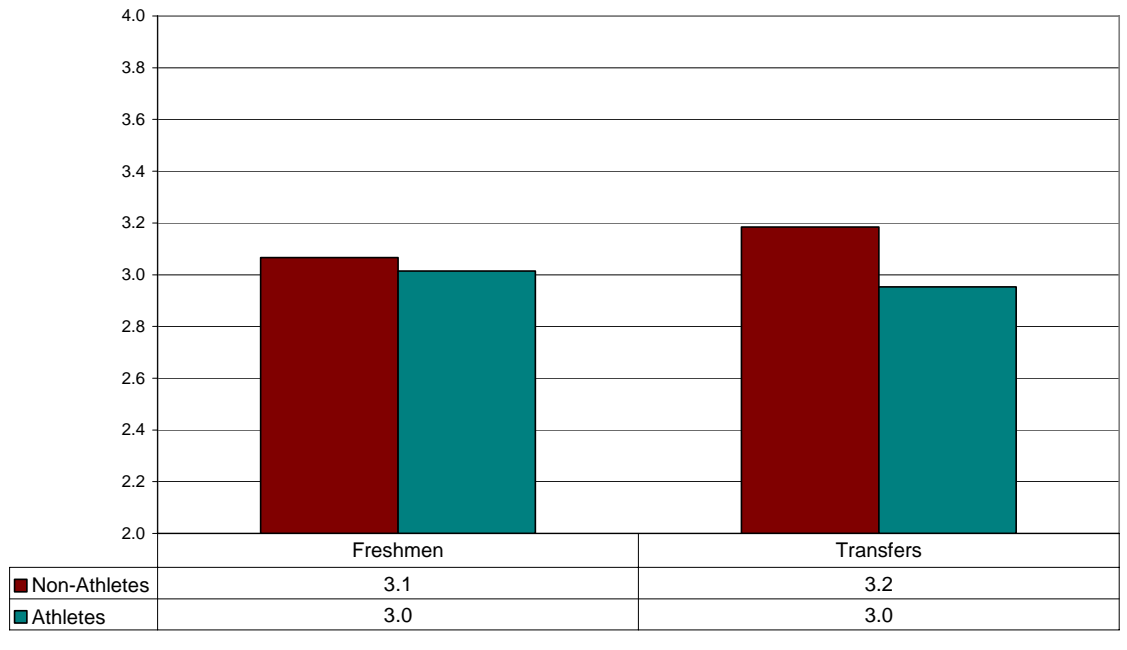


Graduation Characteristics

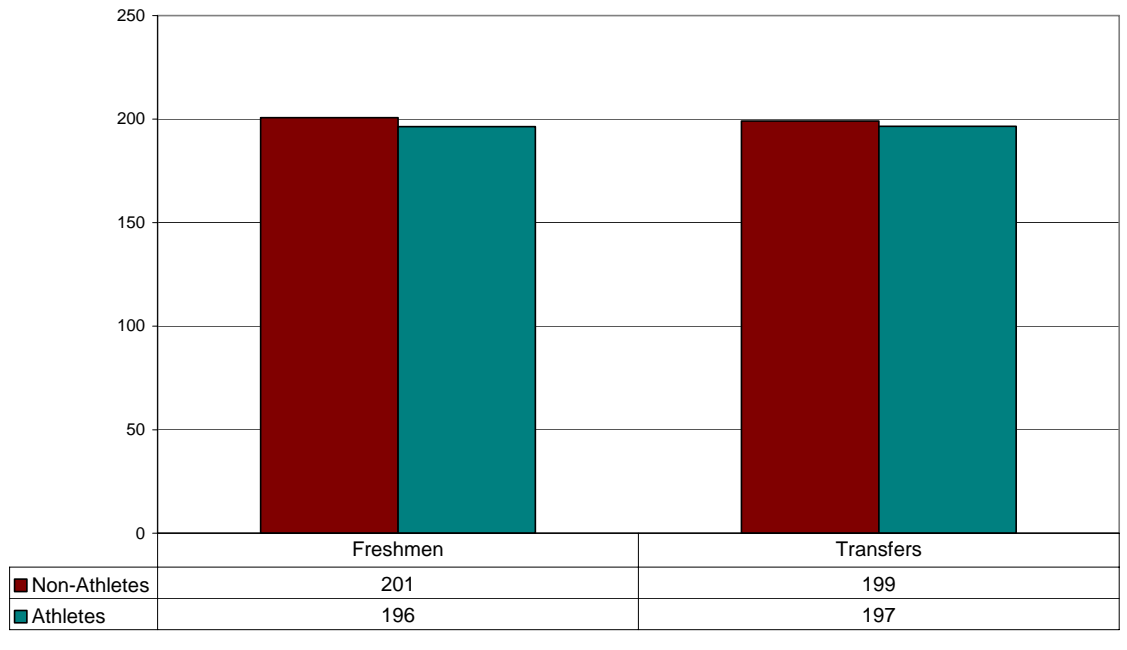
Characteristics at Graduation



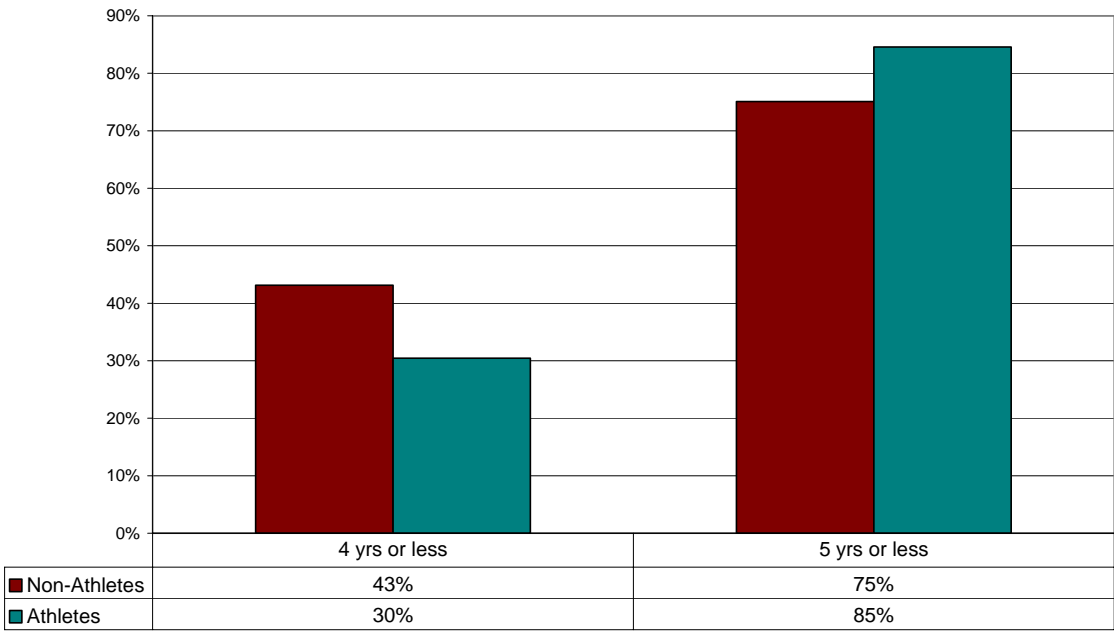
Graduates from the 2000 Entering Class Final Cumulative GPA



Graduates from the 2000 Entering Class Total Units Upon Graduation



Graduation Rates of Freshman Athletes and Non-Athletes that Entered UC Davis in 2000



Tables

Report Notes:

- o Column percentages may not appear to sum to 100% due to rounding.
- o Populations
Demographics and Academic Performance Measures are provided for all students enrolled at UCD in the Fall quarter of the specified year.
Admissions and Graduation Performance Measures are provided for all students who entered UCD as new students in the Fall quarter of the specified year. The entering cohort is tracked to graduation.
Note that "Grants-In-Aid Recipients" and "ICA Participation Roster" are subsets of "Athletes".
- o Units/Quarter
UC Units/Quarter is the mean units/quarter over all Fall, Winter and Spring quarters *attended* to date for all students enrolled in the Fall quarter of the specified year.
UC Units/Summer is the mean units/summer over all Summer terms *attended* to date for students enrolled in the Fall quarter of the specified year.
- o Division of Major
 - A&ES Ag Sci College of Agricultural and Environmental Sciences - Agricultural Sciences
 - A&ES Envir College of Agricultural and Environmental Sciences - Environmental Sciences
 - A&ES Human College of Agricultural and Environmental Sciences - Human Sciences
 - A&ES Explor / Individual College of Agricultural and Environmental Sciences - Exploratory or Individual
 - Biological Sciences Division of Biological Sciences
 - Engineering College of Engineering
 - L&S HArCS College of Letters and Science - Humanities, Arts and Cultural Studies
 - L&S M&PS College of Letters and Science - Mathematical and Physical Sciences
 - L&S Soc Sci College of Letters and Science - Social Sciences
 - L&S Individual College of Letters and Science - Individual

Newly Admitted and Enrolled Athletes & Non-Athletes at the Time of Admission, 2000 to 2004

			Student Type						Grants-In-Aid Athletes			Athletic Participation			
			Non-Athletes			Athletes			Yes			Yes			
			Count	Column N %	Mean	Count	Column N %	Mean	Count	Column N %	Mean	Count	Column N %	Mean	
Entry Status	2000	Freshman	4,107	70%		233	84%		130	89%		184	82%		
		Transfer	1,771	30%		46	16%		16	11%		40	18%		
	2001	Freshman	4,217	70%		195	81%		91	83%		144	82%		
		Transfer	1,822	30%		46	19%		19	17%		32	18%		
	2002	Freshman	4,452	71%		222	81%		112	79%		172	81%		
		Transfer	1,851	29%		53	19%		30	21%		40	19%		
	2003	Freshman	4,582	73%		205	89%		110	90%		150	88%		
		Transfer	1,702	27%		25	11%		12	10%		20	12%		
	2004	Freshman	4,061	69%		205	89%		137	93%		130	86%		
		Transfer	1,796	31%		25	11%		11	7%		22	14%		
Admissions Process	UC Eligible Not Athletic Sponsored	2000	5,674	97%		92	33%		34	23%		66	30%		
		2001	5,843	97%		112	46%		31	28%		72	41%		
		2002	6,060	96%		106	39%		40	28%		74	35%		
		2003	6,050	96%		74	32%		19	16%		41	24%		
		2004	5,734	98%		47	20%		21	14%		37	24%		
	UC Eligible Athletic Sponsored	2000	58	1%		159	57%		100	69%		133	60%		
		2001	53	1%		123	51%		75	68%		101	57%		
		2002	81	1%		161	59%		97	68%		131	62%		
		2003	55	1%		149	65%		100	82%		123	72%		
		2004	47	1%		179	78%		123	83%		112	74%		
	Admitted by Exception	2000	142	2%		27	10%		11	8%		24	11%		
		2001	137	2%		6	2%		4	4%		3	2%		
		2002	155	2%		8	3%		5	4%		7	3%		
		2003	175	3%		7	3%		3	2%		6	4%		
		2004	74	1%		4	2%		4	3%		3	2%		
	Subtotal	2000	5,874	100%		278	100%		145	100%		223	100%		
		2001	6,033	100%		241	100%		110	100%		176	100%		
		2002	6,296	100%		275	100%		142	100%		212	100%		
		2003	6,280	100%		230	100%		122	100%		170	100%		
		2004	5,855	100%		230	100%		148	100%		152	100%		
	Entering Freshmen Students	High School GPA	2000	4,090		3.7	233		3.6	130		3.6	184		3.6
			2001	4,204		3.7	195		3.6	91		3.6	144		3.6
			2002	4,444		3.7	221		3.6	111		3.6	171		3.6
			2003	4,576		3.7	205		3.6	110		3.5	150		3.6
			2004	4,060		3.7	205		3.6	137		3.6	130		3.7
		SAT Comprehensive (mean scores)	2000	4,092		1172	232		1144	129		1138	183		1145
			2001	4,207		1164	193		1145	90		1129	143		1143
			2002	4,438		1171	220		1155	111		1157	171		1155
2003			4,568		1175	201		1135	108		1126	149		1132	
2004			4,058		1171	204		1143	136		1137	129		1152	
Excess A-G Units (beyond 35 units)		2000	4,106		9.1	233		7.8	130		7.1	184		7.8	
		2001	4,214		9.1	195		7.7	91		7.1	144		8.1	
		2002	4,451		9.7	222		7.6	112		7.5	172		7.5	
		2003	4,580		12.0	205		8.3	110		7.9	150		8.2	
		2004	4,061		12.0	205		8.9	137		8.1	130		9.8	
Comprehensive Review (mean scores)		2000	1,972		7303	78		6813	37		6662	59		6799	
		2001	2,161		7024	92		6630	41		6417	69		6607	
		2002	3,597		7490	168		7212	84		7196	129		7205	
		2003	4,386		7883	191		7227	104		7067	142		7243	
		2004	4,049		7947	201		7171	133		7059	128		7415	
Entering Freshmen with Comprehensive Review 2 Scores		2000	CR2 Available	1,972	48%		78	33%		37	28%		59	32%	
			CR2 NA	2,134	52%		155	67%		93	72%		125	68%	
		2001	CR2 Available	2,161	51%		92	47%		41	45%		69	48%	
			CR2 NA	2,053	49%		103	53%		50	55%		75	52%	
	2002	CR2 Available	3,597	81%		168	76%		84	75%		129	75%		
		CR2 NA	854	19%		54	24%		28	25%		43	25%		
	2003	CR2 Available	4,386	96%		191	93%		104	95%		142	95%		
		CR2 NA	194	4%		14	7%		6	5%		8	5%		
	2004	CR2 Available	4,049	100%		201	98%		133	97%		128	98%		
		CR2 NA	12	0%		4	2%		4	3%		2	2%		
Entering Transfer Students GPA	Transfer GPA	2000	1,746		3.3	45		3.2	15		3.1	39		3.1	
		2001	1,794		3.3	45		3.2	18		3.1	32		3.2	
		2002	1,818		3.3	51		3.3	28		3.3	38		3.3	
		2003	1,684		3.3	25		3.2	12		3.2	20		3.2	
		2004	1,778		3.3	24		3.1	11		3.2	21		3.1	

Source: Student Affairs Research & Information.

Note 1: Athletes are listed by year of entry. For example, a student may have been admitted in the year 2000, joined a sport in 2001 (in the roster), and participated in 2002. In this table, such a student would be listed as being part of the 2000 admissions cohort.

Note 2: Excludes Limited Status (UL), Second Baccalaureate (U2), and Post Baccalaureate (PB) students.

Note 3: Includes both full and part time students.

Academic Performance of Enrolled Athletes and Non-Athletes at UC Davis, 2000 to 2004

Class Level	Year	Student Type						Grants-In-Aid Athletes			Athletic Participation		
		Non-Athletes			Athletes			Yes			Yes		
		Count	Column N %	Mean	Count	Column N %	Mean	Count	Column N %	Mean	Count	Column N %	Mean
Freshmen	2000	5,737	29%	288	39%	100	26%	174	30%				
	2001	5,995	29%	269	39%	117	30%	170	32%				
	2002	6,088	28%	263	38%	124	31%	166	31%				
	2003	6,061	27%	271	41%	134	35%	173	34%				
	2004	5,354	24%	297	46%	199	44%	211	40%				
	Sophomore	2000	3,356	17%	175	24%	108	28%	159	28%			
		2001	3,722	18%	143	21%	78	20%	125	24%			
		2002	3,846	18%	142	21%	80	20%	122	23%			
		2003	4,027	18%	127	19%	72	19%	109	21%			
		2004	4,077	18%	110	17%	72	16%	99	19%			
	Junior	2000	5,105	26%	157	21%	91	24%	138	24%			
		2001	5,388	26%	160	23%	104	27%	133	25%			
		2002	5,923	27%	156	23%	93	23%	128	24%			
		2003	5,776	25%	162	25%	100	26%	141	27%			
		2004	6,190	28%	136	21%	94	21%	126	24%			
	Senior	2000	5,289	27%	113	15%	81	21%	104	18%			
		2001	5,402	26%	114	17%	91	23%	100	19%			
		2002	6,070	28%	129	19%	105	26%	116	22%			
		2003	6,805	30%	98	15%	82	21%	92	18%			
		2004	6,700	30%	106	16%	83	19%	97	18%			
Subtotal	2000	19,487	100%	733	100%	380	100%	575	100%				
	2001	20,507	100%	686	100%	390	100%	528	100%				
	2002	21,927	100%	690	100%	402	100%	532	100%				
	2003	22,669	100%	658	100%	388	100%	515	100%				
	2004	22,321	100%	649	100%	448	100%	533	100%				
Cumulative GPA (mean)	2000	19,353	2.9	728	2.8	378	2.8	575	2.9				
	2001	20,357	2.9	683	2.8	389	2.8	528	2.8				
	2002	21,804	2.9	689	2.8	402	2.8	532	2.9				
	2003	22,555	2.9	654	2.9	386	2.8	515	2.9				
	2004	22,221	2.9	645	2.8	444	2.8	532	2.9				
Average Units per Quarter (mean)	2000	19,257	12.6	729	12.4	378	12.6	575	12.8				
	2001	20,371	12.6	684	12.4	390	12.6	528	12.8				
	2002	21,823	12.7	689	12.4	402	12.6	532	12.7				
	2003	22,582	12.7	656	12.4	387	12.5	515	12.6				
	2004	22,225	13.0	648	12.3	447	12.3	533	12.7				
Summer School Units (mean)	Graded Units Attempted	2000	4,474	7.0	154	5.6	79	6.1	130	5.6			
	(includes both summer sessions-- graded units attempted as of the census date)	2001	6,141	8.6	145	6.9	74	7.2	103	6.8			
	2002	7,640	9.0	161	7.0	89	7.0	132	6.9				
	2003	7,586	8.9	183	6.5	105	6.6	156	6.5				
	2004	7,945	9.2	169	7.3	111	7.4	145	7.2				
% Attending Summer School	Did not Attend Summer School	2000	15,013	77%	579	79%	301	79%	445	77%			
		2001	14,366	70%	541	79%	316	81%	425	80%			
		2002	14,287	65%	529	77%	313	78%	400	75%			
		2003	15,083	67%	475	72%	283	73%	359	70%			
		2004	14,376	64%	480	74%	337	75%	388	73%			
	Summer Attendance (includes both summer sessions-- graded units attempted as of the census date)	2000	4,474	23%	154	21%	79	21%	130	23%			
		2001	6,141	30%	145	21%	74	19%	103	20%			
		2002	7,640	35%	161	23%	89	22%	132	25%			
		2003	7,586	33%	183	28%	105	27%	156	30%			
		2004	7,945	36%	169	26%	111	25%	145	27%			
Academic Standing	Good Standing	2000	17,651	91%	674	92%	342	90%	535	93%			
		2001	18,695	91%	633	92%	361	93%	498	94%			
		2002	19,947	91%	624	90%	371	92%	497	93%			
		2003	20,700	91%	602	91%	356	92%	473	92%			
		2004	20,316	91%	601	93%	411	92%	499	94%			
	Probation or Subject to Dismissal	2000	1,836	9%	59	8%	38	10%	40	7%			
		2001	1,812	9%	53	8%	29	7%	30	6%			
		2002	1,980	9%	66	10%	31	8%	35	7%			
		2003	1,969	9%	56	9%	32	8%	42	8%			
		2004	2,005	9%	48	7%	37	8%	34	6%			

Source: Student Affairs Research & Information.
 Note 1: Excludes Limited Status (UL), Second Baccalaureate (U2), and Post Baccalaureate (PB) students.
 Note 2: Includes both full and part time students.

Graduation Rates & Performance of Athletes & Non-Athletes at UC Davis, 2000 to 2004

	Cohort	Student Type				Grants-In-Aid Athletes		Athletic Participation	
		Non-Athletes		Athletes		Yes		Yes	
		Count	Column N % Mean	Count	Column N % Mean	Count	Column N % Mean	Count	Column N % Mean
Freshmen Cohort Admitted	2000	4,107		233		130		184	
	2001	4,217		195		91		144	
Graduation Rates (cumulative n) (cumulative %)	4 yrs or less	2000	1,772 43%	71 30%		34 26%		58 32%	
		2001	1,798 43%	70 36%		30 33%		53 37%	
	5 yrs or less	2000	3,084 75%	197 85%		115 88%		161 88%	
Transfer Cohort Admitted	2000	1,771		46		16		40	
	2001	1,822		46		19		32	
Graduation Rates (cumulative n) (cumulative %)	2 yrs or less	2000	691 39%	11 24%		2 13%		10 25%	
		2001	734 40%	11 24%		3 16%		6 19%	
	3 yrs or less	2000	1,307 74%	32 70%		9 56%		28 70%	
		2001	1,365 75%	27 59%		8 42%		19 59%	
	4 yrs or less	2000	1,444 82%	40 87%		13 81%		35 88%	
		2001	1,503 82%	37 80%		14 74%		26 81%	
	5 yrs or less	2000	1,485 84%	40 87%		13 81%		35 88%	
Graduates by College or Division	2000 Cohort	A&ES Ag Sci	267 6%	9 4%		2 2%		5 3%	
		A&ES Envir	109 2%	8 3%		5 4%		7 4%	
		A&ES Human	603 13%	40 17%		22 17%		34 17%	
		A&ES Explor/Individual	6 0%	1 0%		0 0%		1 1%	
		Biological Sciences	789 17%	32 14%		20 16%		27 14%	
		Engineering	586 13%	14 6%		8 6%		12 6%	
		L&S HArCS	469 10%	13 5%		5 4%		7 4%	
		L&S M&PS	136 3%	2 1%		1 1%		2 1%	
		L&S Soc Sci	1,597 35%	118 50%		65 51%		101 52%	
		Individual	6 0%	0 0%		0 0%		0 0%	
		Subtotal	4,568 100%	237 100%		128 100%		196 100%	
	2001 Cohort	A&ES Ag Sci	172 5%	7 7%		1 2%		6 8%	
		A&ES Envir	77 2%	1 1%		0 0%		1 1%	
		A&ES Human	446 14%	21 20%		10 23%		14 18%	
		A&ES Explor/Individual	3 0%	0 0%		0 0%		0 0%	
		Biological Sciences	579 18%	18 17%		9 20%		14 18%	
		Engineering	374 11%	2 2%		1 2%		1 1%	
		L&S HArCS	333 10%	10 9%		4 9%		7 9%	
		L&S M&PS	85 3%	4 4%		1 2%		3 4%	
		L&S Soc Sci	1,232 37%	44 41%		18 41%		33 42%	
	Individual	0 0%	0 0%		0 0%		0 0%		
	Subtotal	3,301 100%	107 100%		44 100%		79 100%		
Total Units at Graduation	Freshmen	2000	3,084 201	197 196		115 195		161 196	
		2001	1,798 197	70 191		30 188		53 189	
	Transfers	2000	1,485 199	40 197		13 193		35 196	
		2001	1,503 199	37 195		14 196		26 198	
Final GPA (cumulative)	Freshmen	2000	3.084 3.1	197 3.0		115 3.0		161 3.0	
		2001	1.798 3.2	70 3.1		30 3.2		53 3.1	
	Transfers	2000	1.485 3.2	40 3.0		13 2.9		35 2.9	
		2001	1.503 3.2	37 3.0		14 2.8		26 3.1	

Source: Student Affairs Research & Information.

Note 1: Athletes are listed by year of entry. For example, a student may have been admitted in the year 2000, joined a sport in 2001 (in the roster), and participated in 2002. In this table, such a student would be listed as being part of the 2000 admissions cohort.

Note 2: Excludes Limited Status (UL), Second Baccalaureate (U2), and Post Baccalaureate (PB) students.

Note 3: Includes both full and part time students.